

MDOT Expands I-20 Smart Infrastructure in Collaboration with LADOTD



Gresham Smith

Today's Agenda

Introduction

Overview of Projects

Why ITS is important

Clinton Signal Corridor Re-timing

I-20 Jackson Bridge Replacement ITS Services

I-20 MS River Bridge ITS Services

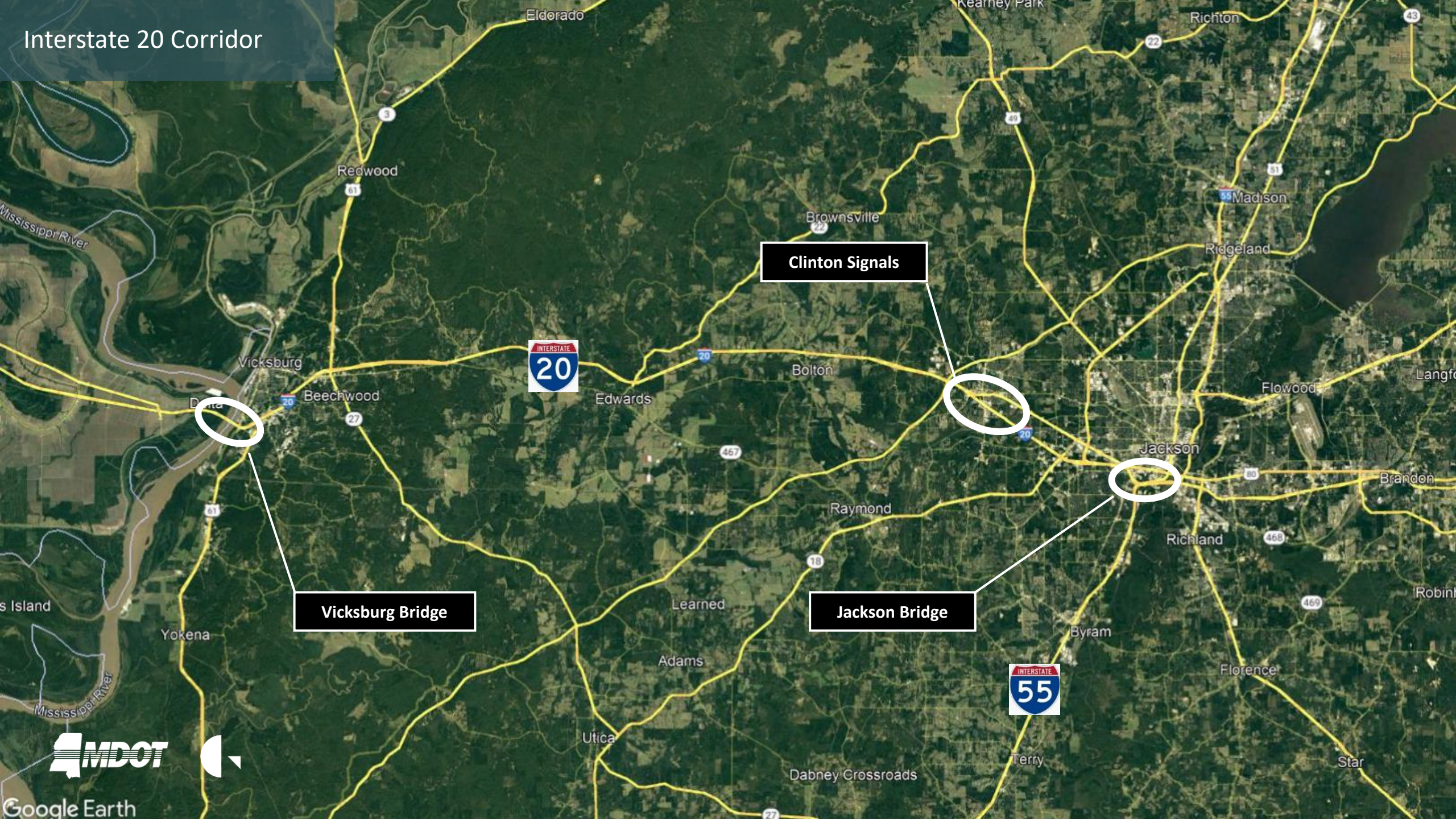
Q&A



Overview



Interstate 20 Corridor

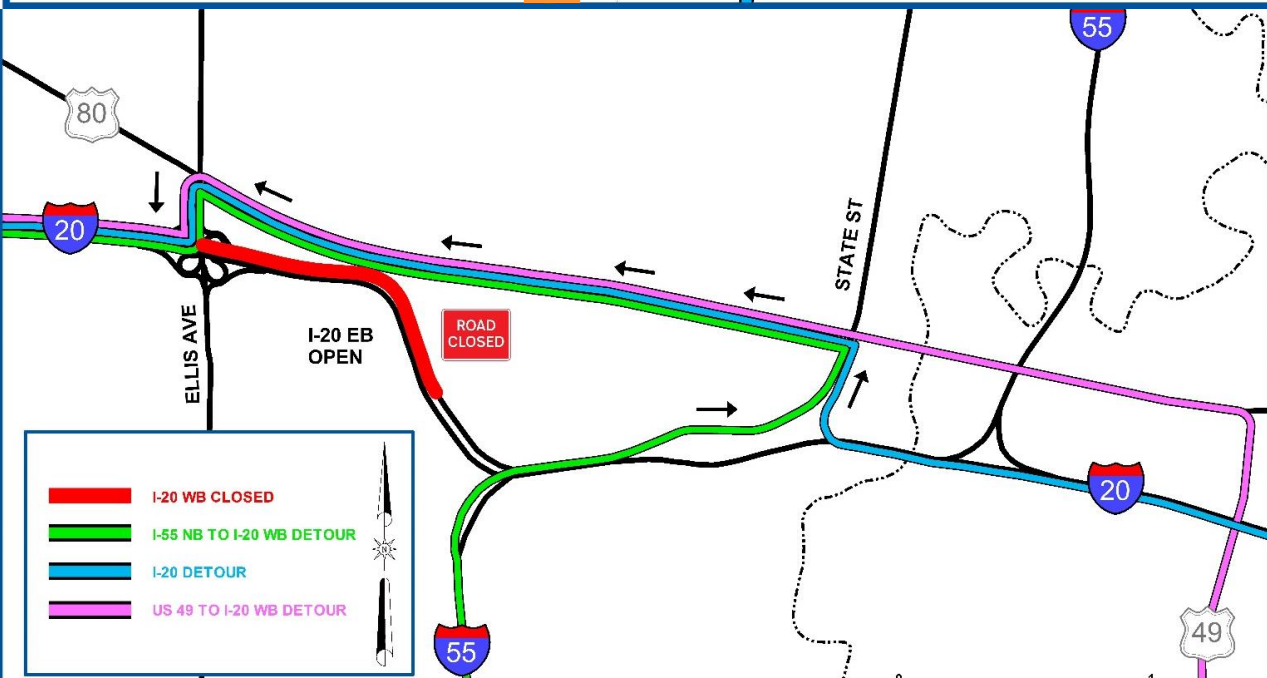
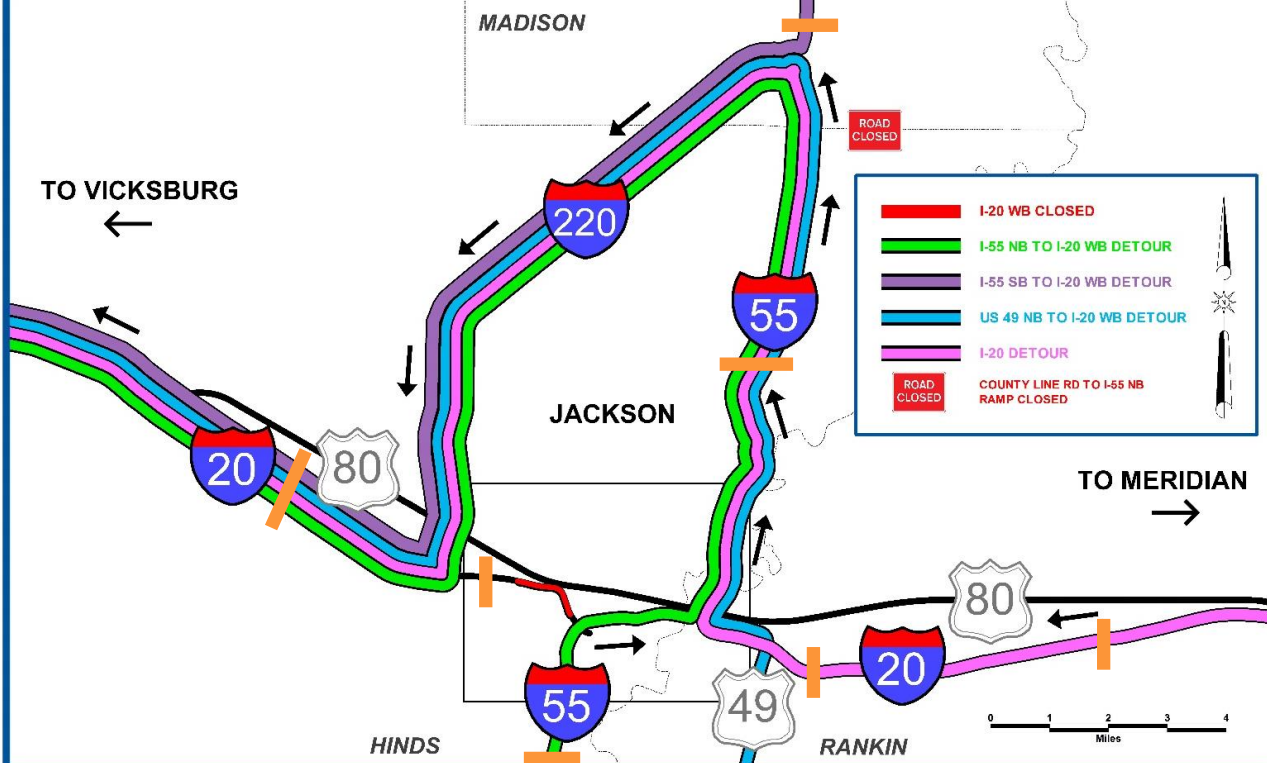


Clinton Signals

Vicksburg Bridge

Jackson Bridge

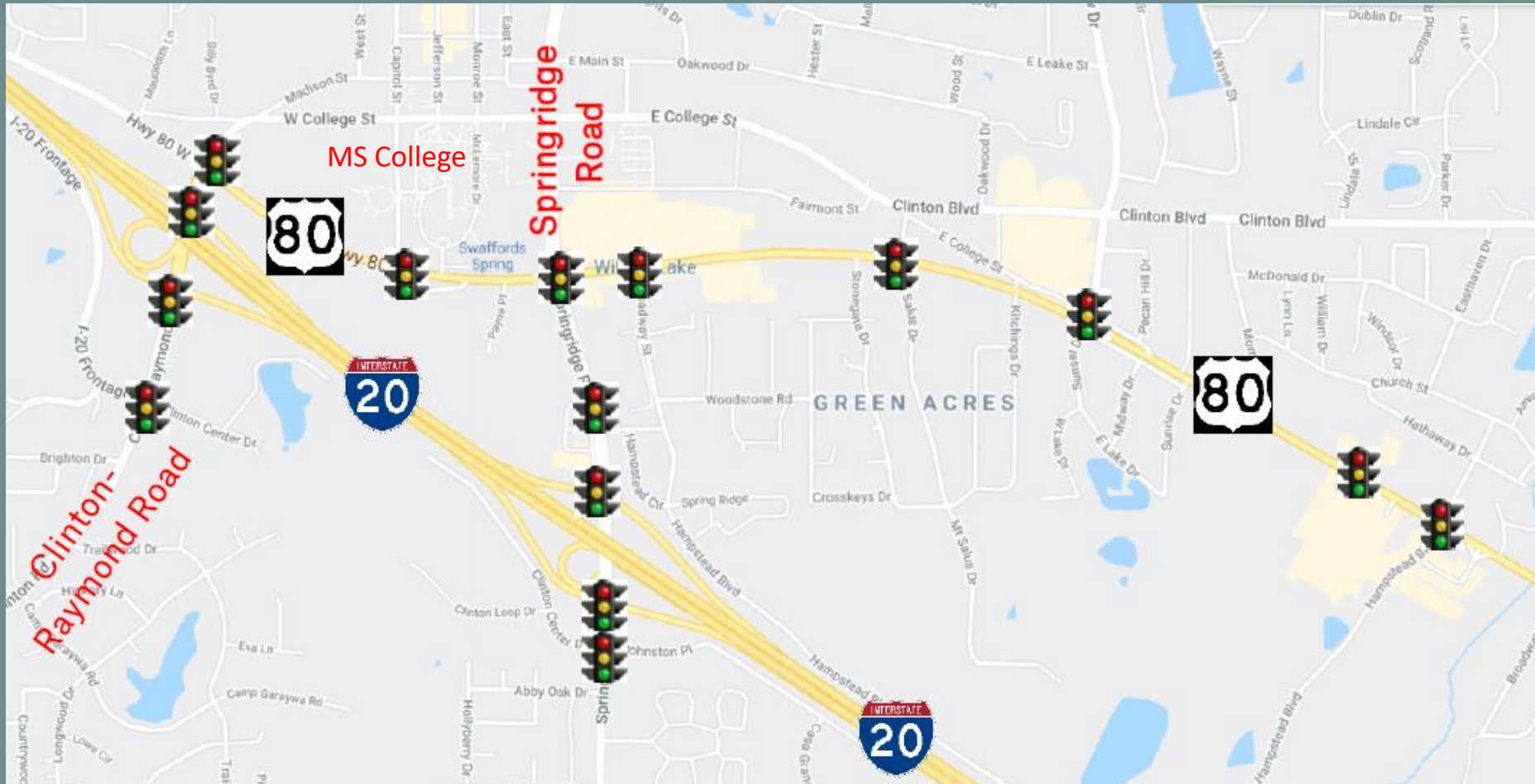




ITS in Use

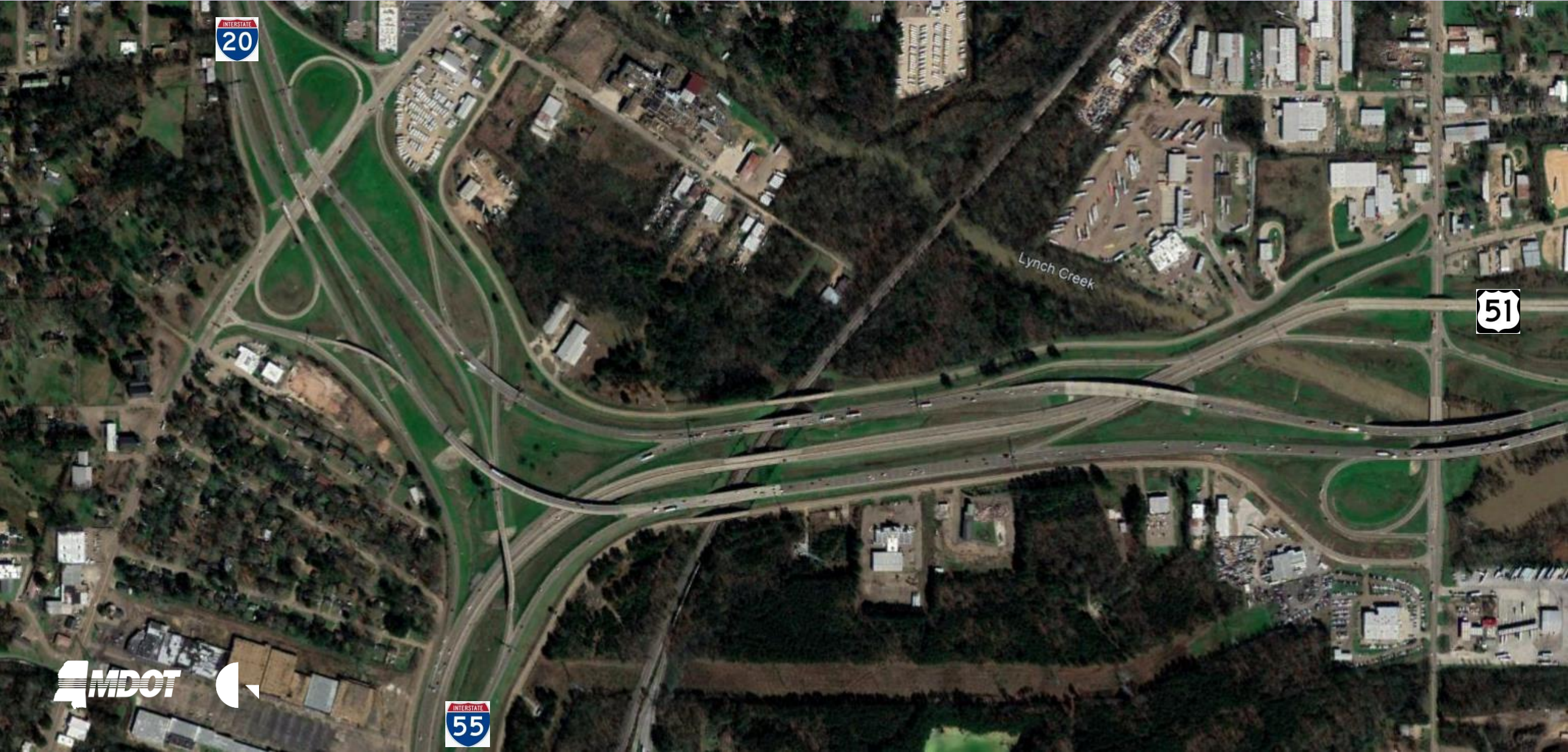
- Bridge resurfacing project
 - A separate closure for each direction lasting 5 days each, starting at 7 PM Fri Oct 18, 2019
 - Approximately 93k ADT in this section.
 - 10 Inbound DMS in the area (7 shown)
 - Dozens of cameras and detectors in the immediate vicinity

Clinton Signal Corridor Re-timing

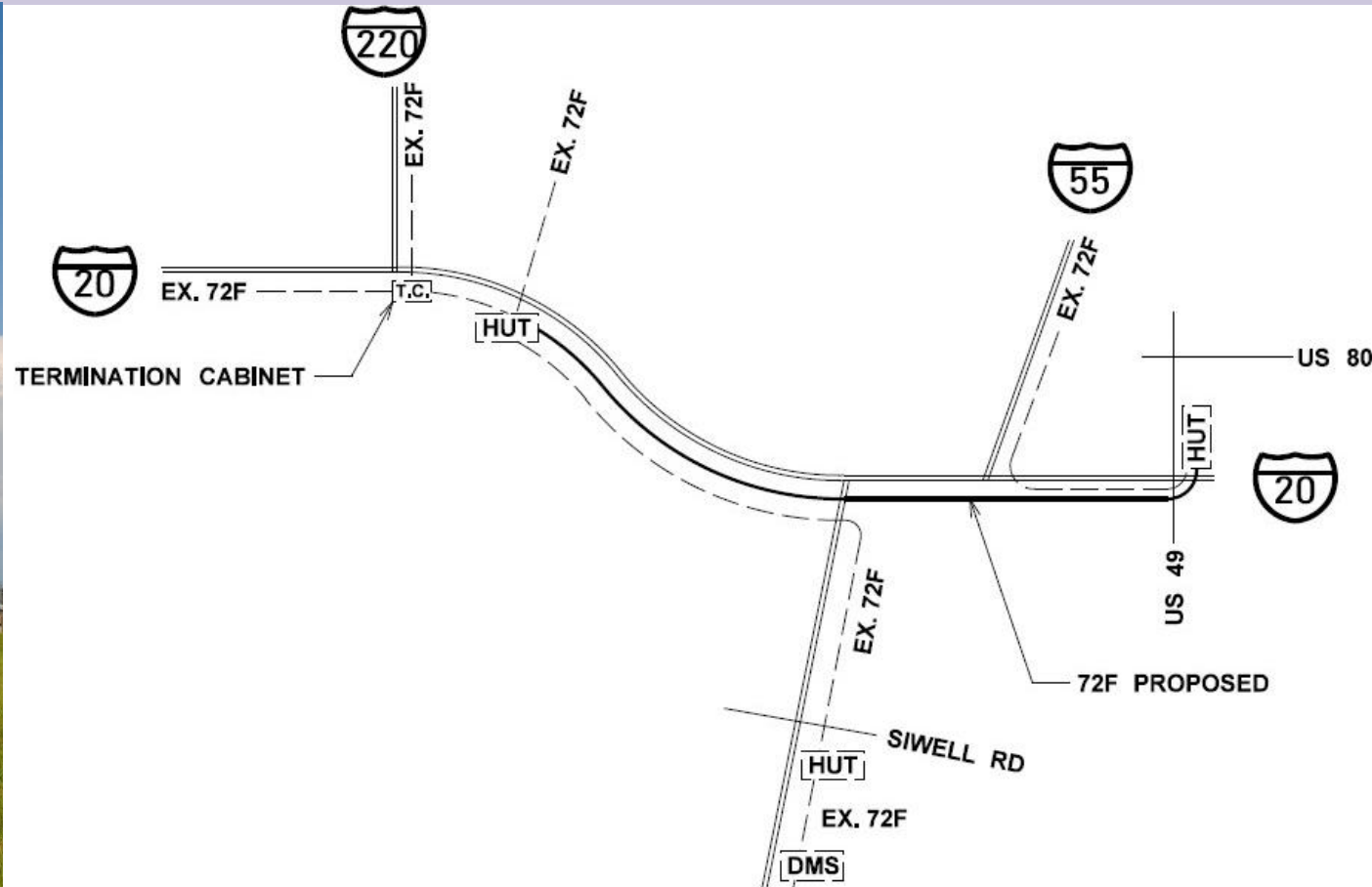


- 15 Signals along 3 corridors
- Re-timing and Coordination
- Before/After Study
- Capacity Analysis and recommendations

I-20 Jackson Bridge Replacement ITS Services



I-20 Jackson Bridge Replacement ITS Services



- Filled gap in Fiber loop
- Connected wireless devices
- Upgraded and added cameras
- Moved beacon signs

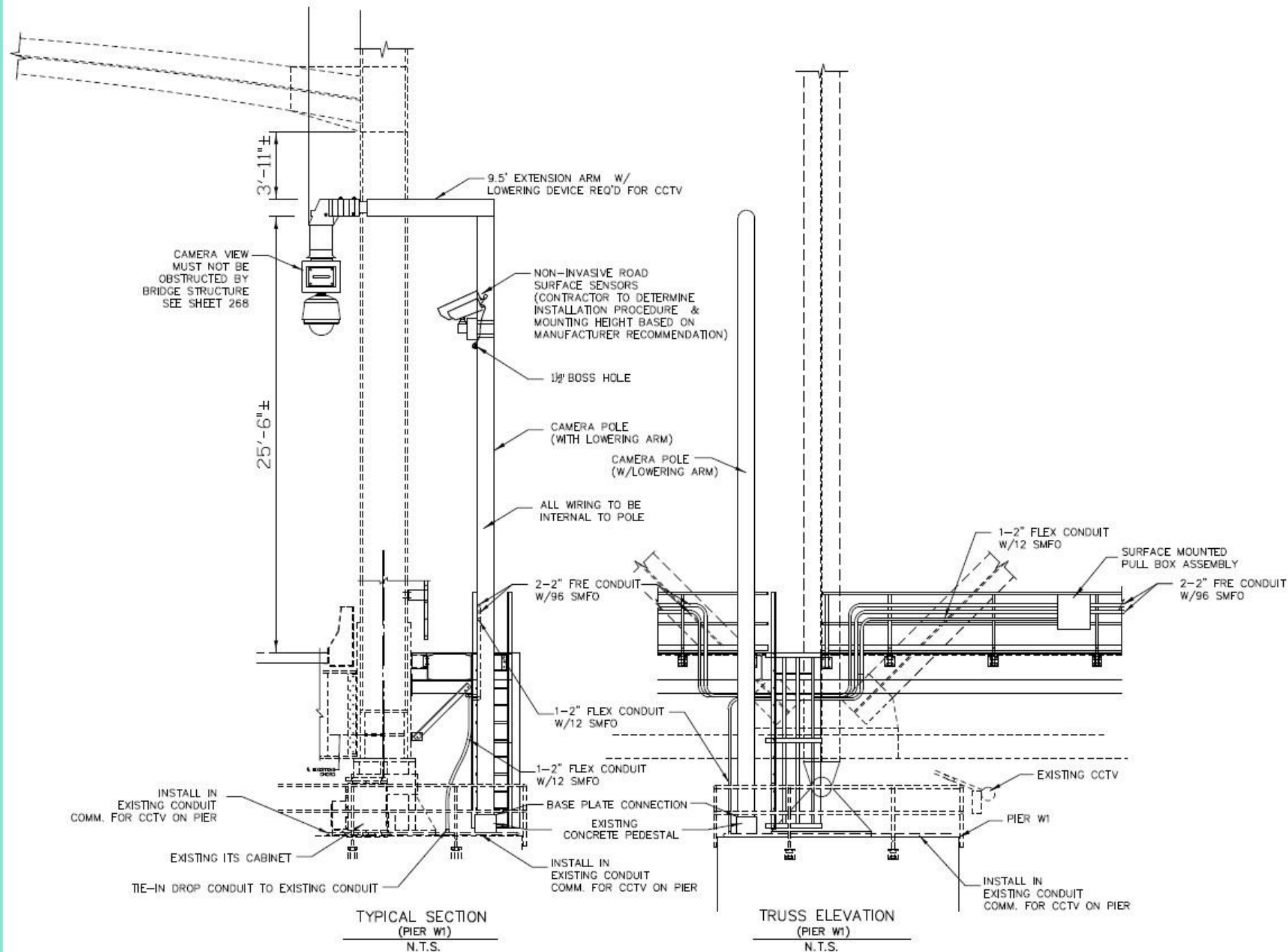
I-20 MS River Bridge ITS Services



I-20 MS River Bridge ITS Services



Camera on the Pier



Questions?